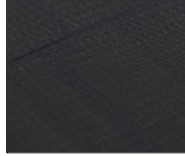


Product Details

FLEXIBLE SOLAR PANEL

SG-TF-D2-180W



Anti-Slip Surface

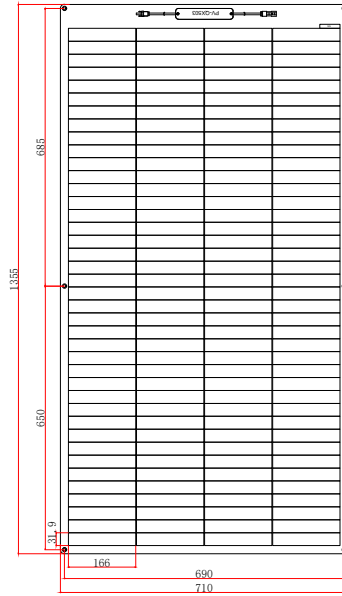


Junction Box

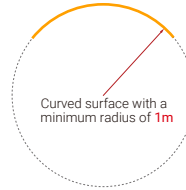


MC4

Module Diagram



Solar panel bending diagram



Solar panel

Electrical Characteristics

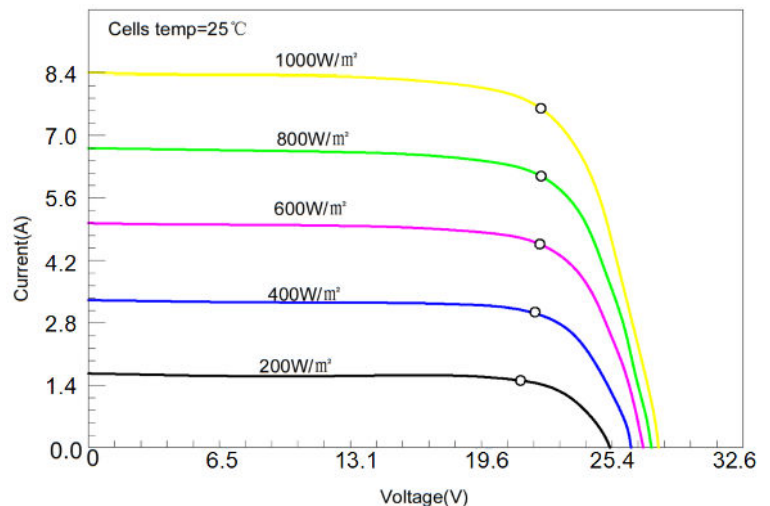
Maximum power(Pmax)	180W
Open-circuit voltage(Voc)	27.4
Voltage at Pmax(Vmp)	23.2V
Short-circuit current(Isc)	8.22A
Current at Pmax(Imp)	7.76A
Cells Efficiency(%)	22.7%
The maximum system voltage	600V DC(IEC)
Power temperature coefficient	-0.38%/°C
Voltage temperature coefficient	-0.36%/°C
Current temperature coefficient	0.07%/°C
Output power tolerance	±3%
Operating Temperature	-40°C+85°C

Specifications

Solar cell brand	166 mono solar cells
No.of cells and connections	160(4*40)
Module dimension	1355*710*3mm
Weight	4.18kg
Output cable	JB (2*bypass diodes) + 900mm/4mm ² cable+MC4 compatible
Waterproof	IP68
Certifications	CE, ROHS
Maximum bending arch height	230mm
Warranty	5 years and service life 20 years

Product Introduction

TF series photovoltaic panel adopts proven crystalline silicon solar cell technology and polymer composite material to achieve a new type of pv module that is glass-free, lightweight and thin sheet. The solar cells use PERC Shingle-cell technology to achieve zero cell spacing, which effectively increases the light-receiving area of the module.



*SUNGOLD offer customize service, please refer to our website or ask SUNGOLD workers for more sizes and the latest parameters.