

SUNGOLD SOLAR SOLAR CUSTOMIZER FOR SMEs

Energy Tailored, Future Empowered



SHENZHEN

SUNGOLD SOLAR CO., LTD.



ONE WORLD, ONE HOME, BLUE SKIES

Solar panel manufacturer committed to low-carbon life

CONTENTS

01

ABOUT US

About Us	02
Introduction	03
Certifications	05

02

FLEXIBLE SOLAR PANEL

PA219 Series	07
PA621 Series	11
TF Series	15

03

PORTABLE SOLAR PANEL

BXF Series	19
Winner Bag Series	23
SPC Series	26

04

FOLDING SOLAR PANEL

Hi-Power Series	30
SGF Series	33

05

RIGID SOLAR PANEL

SGM Series	39
SG-DG Series	40

05

FLAT SOLAR TILE

SRT Series	39
------------	----

Sungold Solar Solar Customizer for SMEs

Since 2008, Sungold Solar has been more than a solar **manufacturer** - we're your creative collaborator, **designing off-grid solar solutions** that fit your business like a glove. With **over 1,000 SMEs** worldwide trusting us, we turn your **energy needs** into **opportunities**: lower costs, stronger brands, and a competitive edge. **Our 100+** patented innovations make us the **go-to customizer** for small and medium-sized businesses ready to stand out.

2008

Manufacturer Since

10,000 m²

Factory Area

400 +

Employees

100 +

Patent Certification

Energy Tailored to You, Powering a Brighter Tomorrow

 Shenzhen Sungold Solar Co., Ltd.

 sales@sungoldsolar.cn

 +86-755-2968-5821 ext. 813/881

 www.sungoldsolar.com



INDONESIAN SOLAR PANEL MANUFACTURER



PT SUNGOLD SOLAR POWER

INDONESIA FACTORY: PT SUNGOLD SOLAR POWER

Sungold established a factory in Indonesia and launched fullscale production of a complete range of products, including flexible, rigid, and folding solar panels, significantly enhancing its production capacity and market response efficiency.

Factory Review

Accumulating the experience for more than a decade, Sungold has become a company with mature technology and management system.



Certifications

Sungold's manufacturing excellence is validated by internationally recognized certifications, underscoring our commitment to reliability and professional standards.

Product Certifications

TÜV • CE • RoHS • UL • REACH

Guaranteeing compliance with global safety and environmental requirements.

Corporate Accreditations

- ISO 9001 (Quality Management)
- ISO 14001 (Environmental Management)
- BSCI (Social Compliance)
- SRIU Enterprise (Specialized/Innovative Solutions)
- National High-Tech Enterprise

Demonstrating leadership in operational excellence and sustainable innovation.



ISO14001



ISO9001



TÜV



UL



FCC



CE



RoHS

FLEXIBLE SOLAR PANEL

PA219 / PA621 / TF Series

PA219 SERIES

FLEXIBLE SOLAR PANEL

*Lightweight / Flame Retardant / Impact Resistant /
TUV & CSA Certified*





POWERING VERSATILE ENERGY SOLUTIONS

Not Just Roofs, Solar Everywhere

The PA219 Flexible Solar Panel is designed for a wide range of applications, providing a lightweight, durable, and adaptable energy solution for diverse environments.

Lightweight Design

Weighs only 3.3 kg per square meter and is just 3mm thick, reducing rooftop load-bearing pressure.

Impact Resistance & Crack Prevention

Features excellent impact resistance, preventing microcracks, and can withstand harsh weather conditions.

Superior Fire Retardancy

Meets Class C fire retardancy standards, ensuring higher safety and stability.

Anti-Glare and Scratch Resistance

Surface treatment prevents glare and scratches, extending the lifespan of the module.



PA219 Series Flexible Solar Panel

delivers efficient and reliable solutions tailored to diverse application scenarios.

TÜV/CE/RoHS/CSA/REACH



SPECIFICATION [Topcon and BC solar cells]

Model	Cells	Model size	Weight	Voc(V)	Vmp(V)	Isc(A)	Imp(A)
SG-T-PA219-100W	Mono	890*595*3mm	1.7kg	28.0	24.8	4.23	4.04
SG-T-PA219-200W	Mono	1380*780*3mm	3.6kg	40.4	34.2	6.14	5.85
SG-T-PA219-265W	Mono	1515*925*3mm	4.5kg	25.8	22.9	12.15	11.58
SG-T-PA219-325W	Mono	1515*1110*3mm	5.5kg	31.5	27.9	12.23	11.65
SG-T-PA219-400W	Mono	2250*920*3mm	6.8kg	38.7	34.3	12.24	11.67
SG-T-PA219-490W	Mono	2250*1110*3mm	8.2kg	47.3	41.9	12.28	11.70
SG-PA219-BC-110W	Mono	1030*595*3mm	2.0kg	21.7	18.9	5.99	5.85
SG-PA219-BC-150W	Mono	1030*780*3mm	2.6kg	29.0	25.2	6.13	5.96
SG-PA219-BC-450W	Mono	2255*1030*3mm	7.5kg	43.5	37.8	12.26	11.91

Electrical Characteristics

The maximum system voltage	Topcon solar cells: 1500V DC(IEC)	BC solar cells: 1000V DC(IEC)
Power temperature coefficient	0.32%/ C	
Voltage temperature coefficient	-0.26%/ C	
Current temperature coefficient	0.046%/ C	
Output power tolerance	±5%	
Operating Temperature	-40 C ~ 85 C	
Warranty	10 Years Warranty <small>(For specific scenarios, please contact us)</small>	

PA621 SERIES

LIGHTWEIGHT SOLAR PANEL

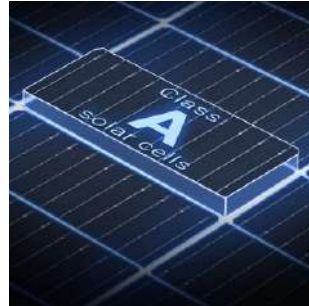
Lightweight / Heat Dissipation / Cell-level Shadow Management Technology





***Your Partner in
Off-Grid Energy Innovation***

Energy Tailored to You, Powering a Brighter Tomorrow



SUNGOLD PA621 LIGHTWEIGHT SOLAR PANELS

Cell-level Shadow Management Technology

- *Ultra-Light 4.4 kg/m²*
- *22.7% Cell Efficiency*
- *All-Weather Durability*
- *Zero Hot Spot Technology*

Advanced Thermal Insulation

Featuring a high-performance heat-dissipating backsheet with a thermal conductivity of just 0.2W/(m·K), the PA621 ensures minimal temperature rise, preserving output stability in high-temperature environments.

Superior Durability

Constructed with robust composite materials, the PA621 is engineered for resistance to hail, impact, and environmental stress, ensuring long-term operational reliability.

SPECIFICATION 【 Topcon and BC solar cells 】

Model	Cells	Model size	Weight	Voc(V)	Vmp(V)	Isc(A)	Imp(A)
SG-PA621-100W	Mono	1078*622*12mm	3.6kg	28.5	24.4	4.30	4.10
SG-PA621-120W	Mono	1210*622*12mm	4.1kg	22.3	19.1	6.60	6.29
SG-PA621-130W	Mono	1305*622*12mm	4.3kg	24.5	20.9	6.53	6.23
SG-PA621-145W	Mono	1115*807*12mm	4.7kg	27.1	23.2	6.56	6.26
SG-PA621-170W	Mono	1315*807*12mm	5.4kg	24.5	20.9	8.54	8.14
SG-PA621-BC-105W	Mono	1090*622*12mm	3.7kg	21.5	19.0	5.80	5.53
SG-PA621-BC-140W	Mono	1090*807*12mm	4.8kg	28.7	25.4	5.79	5.52
SG-PA621-BC-200W	Mono	1460*807*12mm	6.4kg	20.1	17.8	11.81	11.25

Electrical Characteristics

The maximum system voltage	1000V DC (IEC)
Power temperature coefficient	-0.35%/C
Voltage temperature coefficient	-0.275%/C
Current temperature coefficient	+0.045%/C
Output power tolerance	±5%
Operating Temperature	-20°C~75°C
Warranty	10 years

TF SERIES

FLEXIBLE SOLAR PANEL

*Polymer Composite Material / 6 Years Warranty /
Strong Impact Resistance*

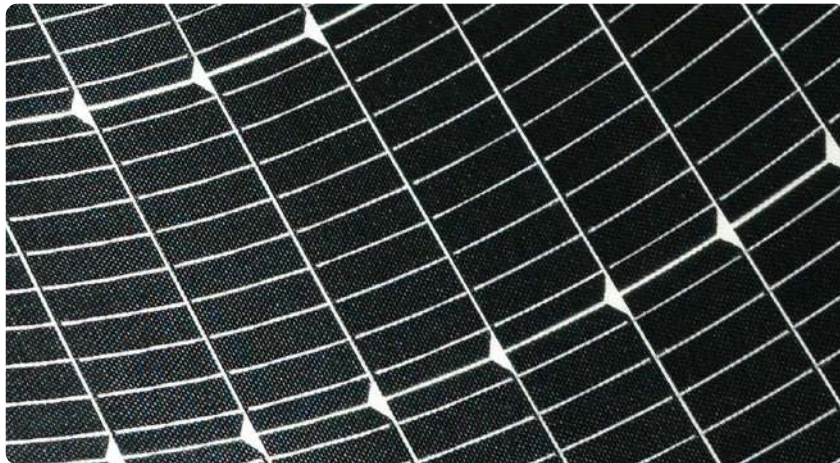


Engineered For Endurance

Crafted With Sungold's Unique Patented Material, The TF Series Offers Superior Durability And Performance, No Matter The Environment. These Panels Are Resistant To Salt Spray, Extreme Weather, And Physical Stress—Ensuring Your Investment Is Protected.

Backed By A 6-Year Warranty

Trust In Long-Term Reliability. Our Advanced Design And Materials Allow Us To Offer A 6-Year Warranty, Giving You And Your Customers Peace Of Mind.



TF Series Flexible Solar Panel

SPECIFICATION

Model	Cells	Model size	Weight	Voc(V)	Vmp(V)	Isc(A)	Imp(A)
SG-TF-M2-55W	Mono	840*395*3mm	1.15kg	21.8	18.6	3.10	2.96
SG-TF-M2-100W	Mono	960*580*3mm	1.92kg	28.5	24.4	4.30	4.10
SG-TF-M2-115W	Mono	1110*590*3mm	2.26kg	22.3	19.1	6.32	6.03
SG-TF-M2-140W	Mono	1020*765*3mm	2.70kg	27.1	23.2	6.34	6.04
SG-TF-M2-170W	Mono	1220*780*3mm	3.29kg	24.5	20.9	8.54	8.14
SG-TF-M2-210W	Mono	1495*765*3mm	3.95kg	40.7	34.8	6.34	6.04
SG-TF-M2-255W	Mono	1790*765*3mm	4.73kg	48.9	41.8	6.40	6.11
SG-TF-M2-285W	Mono	1500*1030*3mm	5.34kg	27.1	23.2	12.90	12.29

Electrical Characteristics

The maximum system voltage	600V DC(IEC)
Power temperature coefficient	0.35%/ C
Voltage temperature coefficient	-0.275%/ C
Current temperature coefficient	0.045%/ C
Output power tolerance	±5%
Operating Temperature	-40 C ~ 85 C
Warranty	6 Years Warranty

PORTABLE SOLAR PANEL

WINNER BAG / SPC / BXF Series

BXF SERIES

PORTABLE SOLAR PANELS

One-Piece Lamination / IP67 Waterproof / Solar Charger



BXF PLUS

PORTABLE SOLAR PANELS

*BXF-Plus Series Is Lighter, Stronger, More Resistant Trekking, Camping, Cycling, Traveling,
Fishing And Other Activities*

Ultra Lightweight Solar Panel BXF-Plus Series

Ultra Lightweight Solar Panel BXF-Plus Series

This Solar Panel Uses Integrated Lamination Technology And High-Quality PVF Materials For Superior Durability And Environmental Resistance. It Offers Excellent Weather And UV Protection, Enhanced By A Fiberglass Composite And Optimized Lamination That Prevents Micro-Cracks, Ensuring Reliability In Harsh Conditions.



Portable Solar Panel BXF Series

Lightweight, Durable, and Perfect for Outdoor Adventures.

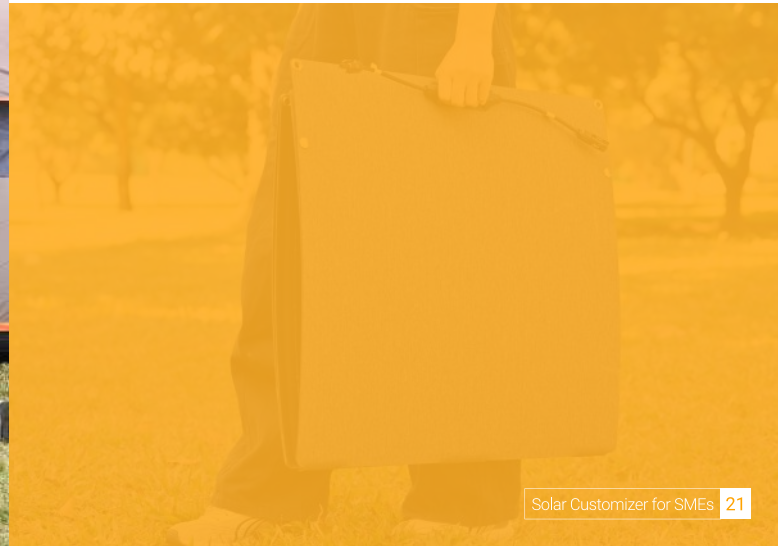
BXF series portable solar panels combine aesthetics with functionality, featuring waterproof and dustproof designs that make them easy to carry outdoors and clean. The one-piece laminated structure provides strong impact resistance, making them ideal for outdoor trips. They can also be adjusted according to usage scenarios and sunlight angles to achieve higher conversion efficiency.



BXF

PORTABLE SOLAR PANELS

BXF-M Series Portable Solar Blanket Adopts Conventional Cell Welding Technology, Durable And Strong With Long Service Life



SPECIFICATION 【 Topcon and BC solar cells 】

Model	Cells	Folding Size	Unfold Size	Weight	Voc(V)	Vmp(V)	Isc(A)	Imp(A)
BXF-3*10W	Mono	325*222*35mm	675*325*3mm	0.90kg	12.2	10.4	3.03	2.89
BXF-3*20W	Mono	405*327*35mm	990*405*3mm	1.75kg	24.4	20.9	3.01	2.88
BXF-4*30W	Mono	470*413*37mm	1665*470*3mm	3.41kg	24.4	20.9	6.03	5.75
BXF-4*50W-A	Mono	615*573*50mm	2154*615*18mm	8.00kg	20.4	17.4	12.07	11.50
BXF PLUS-2x50W	Mono	610*590*35mm	1188*610*3mm	3.5kg	20.4	17.4	6.03	5.75
BXF PLUS-4x50W	Mono	610*590*50mm	2232*610*3mm	4.3kg	20.4	17.4	12.07	11.50
BXF PLUS-8x20W	Mono	410*340*50mm	1560*820*3mm	4.5kg	32.6	27.8	6.04	5.76
BXF PLUS-BC-2x55W	Mono	575*600*40mm	1150*600*3mm	2.4kg	21.53	19.05	6.06	5.78
BXF PLUS-BC-4x55W	Mono	575*600*45mm	2154*600*3mm	4.55kg	43.1	38.1	6.06	5.78
BXF BXF-BC-4x110W	Mono	970*670*50mm	2520*970*3mm	8.6kg	43.1	38.1	12.13	11.55

Electrical Characteristics

The maximum system voltage	200V DC(IEC)
Power temperature coefficient	0.35%/ C
Voltage temperature coefficient	-0.275%/ C
Current temperature coefficient	0.045%/ C
Output power tolerance	±5%
Operating Temperature	-10 C ~ 60 C
Warranty	BXF PLUS: 3-year warranty BXF: 1-year warranty

WINNER BAG SERIES

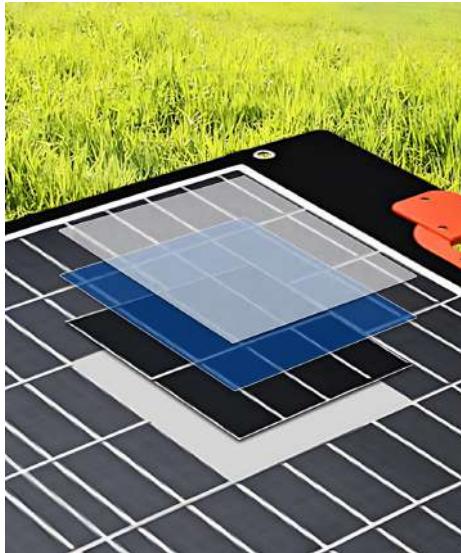
PORTABLE SOLAR PANELS

High Impact Resistance / Foldable & Portable / Flexible Setup



Portable Solar Panels

Sungold Winner Bag series portable solar panels feature high-efficiency cells and adjustable brackets for optimal setup. They are easy to carry and customizable in size and handle color, making them ideal for outdoor use.



New composite material



High impact resistance



Suitable for portable power stations

SPECIFICATION

Model	Cells	Folding Size	Unfold Size	Voc(V)	Vmp(V)	Isc(A)	Imp(A)
SGWB2-TF-M2-2X50W-B	Mono	600*590*36mm	1195*590*20mm	24.5	20.9	5.03	4.79
SGWB2-TF-M2-4X50W-B	Mono	600*590*36mm	2223*590*20mm	24.5	20.9	10.05	9.57

Electrical Characteristics

The maximum system voltage	100V DC(IEC)
Power temperature coefficient	-0.35%/C
Voltage temperature coefficient	-0.275%/C
Current temperature coefficient	+0.045%/C
Output power tolerance	±3%
Operating Temperature	-10 C ~60 C
Warranty	1 year

SOLAR PANELS POWER YOUR OUTDOOR JOURNEY.

SPC SERIES

PORTABLE SOLAR PANELS

2-Year Warranty / Impact Resistant / Durable



HOT SPC SERIES

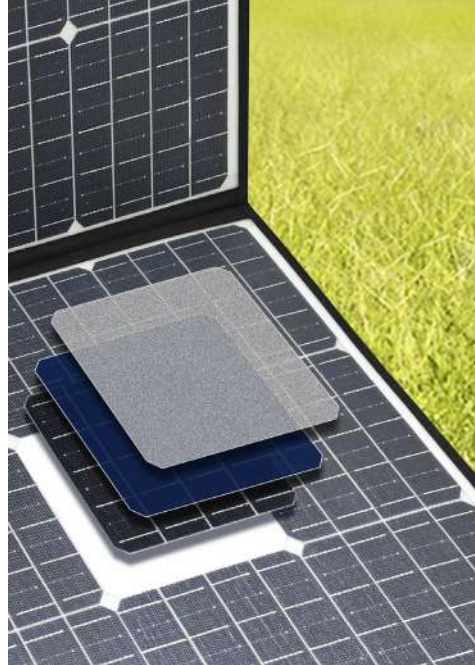
Product Features

The SPC series portable solar panel is foldable for easy portability and storage, perfect for use in RVs or camping.



Ultra-light And Portable

SPC series solar panels are lighter than similar products on the market.



New Composite Materials

With composite backing plate to enhance the impact and crack resistance of the product.



High Efficiency

SPC series solar charging pack adopts high-efficiency solar cells. High conversion efficiency.

SPECIFICATION

Model	Cells	Folding Size	Unfold Size	Weight	Voc(V)	Vmp(V)	Isc(A)	Imp(A)
SPC-TF-S-2*45W	Sunpower	560*440*15mm	1075*560*4mm	2.6kg	26.2	22.3	4.28	4.04
SPC-TF-S-3*45W	Sunpower	560*440*20mm	1525*560*4mm	3.9kg	26.2	22.3	6.42	6.06
SPC-TF-S-4*45W	Sunpower	560*440*25mm	1975*560*4mm	4.8kg	26.2	22.3	8.56	8.08
SPC-TF-M2-2*50W	Mono	595*530*15mm	1060*595*4mm	3.3kg	24.5	20.9	5.02	4.79
SPC-TF-M2-4*50W	Mono	595*530*25mm	2095*595*4mm	6.5kg	24.5	20.9	10.05	9.57

Electrical Characteristics

The maximum system voltage	Mono: 100V DC(IEC)	Sunpower: 100V DC(IEC)
Power temperature coefficient	Mono: -0.35%/ °C	Sunpower: -0.27%/ °C
Voltage temperature coefficient	Mono: -0.275%/ °C	Sunpower: -0.236%/ °C
Current temperature coefficient	Mono: +0.045%/ °C	Sunpower: +0.058%/ °C
Output power tolerance	Mono: ±5%	Sunpower: ±5%
Operating Temperature	Mono: -10 °C ~60 °C	Sunpower: -10 °C ~60 °C
Warranty	Mono: 2 years	Sunpower: 2 years

FOLDING SOLAR PANEL

Hi-Power / SGF Series

HI-POWER SERIES

PORTABLE SOLAR PANELS

IP68 Waterproof / Lightweight / TÜV IEC 63163 Consumer Photovoltaic Products Certification



Product Features

Hi-Power series solar panels are ideal for outdoor living. The solar panels are designed for high-capacity portable power stations.

APPLICABLE TO PORTABLE POWER STATION

Sungold Hi-Power series of foldable solar panels is specifically designed for high-power energy storage systems, featuring exceptional compatibility and enhanced adaptability to meet a wide range of energy storage needs.



SPECIFICATION

Model	Cells	Folding Size	Unfold Size	Weight	Voc(V)	Vmp(V)	Isc(A)	Imp(A)
HP-M2-2*100W	Mono	910*590*50mm	1180*910*25mm	2.6kg	36.6	31.3	6.71	6.39
HP-M2-4*100W	Mono	910*590*90mm	2362*910*25mm	3.9kg	36.6	31.3	13.42	12.78
LVP2 130W A	Mono	640*595*50mm	1193*640*25mm	6.4kg	24.5	20.9	6.53	6.23
LVP2 180W A	Mono	825*595*50mm	1193*825*25mm	8.3kg	24.5	20.9	9.04	8.62
LVP2 270W A	Mono	910*780*50mm	1563*910*25mm	11.5kg	24.5	20.9	13.56	12.92

Electrical Characteristics

The maximum system voltage	HP: 2*100W 100V DC(IEC)	4*100W 200V DC(IEC)	LVP2: 100V DC(IEC)
Power temperature coefficient	-0.35%/ C		
Voltage temperature coefficient	-0.275%/ C		
Current temperature coefficient	+0.045%/ C		
Output power tolerance	±3%		
Operating Temperature	-20 C ~70 C		
Waterproofing grade	IP68		
Warranty	5 years		

SGF SERIES

FOLDING SOLAR PANEL

Durable / IP67 Waterproof / 10-Year Warranty



BEST FOLDING SOLAR PANELS

Mature Design

Sungold SGF Series Folding Best Portable Solar Panels Are Designed And Manufactured With Standard Glass Panels And Are One Of The Most Mature Solar Products And The Most Familiar To Customers.

Strong And Durable

This Product Has Been Tested In The Environment For A Long Time And Is Stable, Proven, And Durable. The Corrosion-Resistant Aluminum Frame For Outdoor Use Allows The Solar Panels To Last For Decades, And Withstand Strong Wind And Snow Loads.



SPECIFICATION

Model	Cells	Folding Size	Unfold Size	Weight	Voc(V)	Vmp(V)	Isc(A)	Imp(A)
SGF3-130W	Mono	625*590*30mm	1183*625*30mm	11.8kg	24.5	20.9	6.53	6.23
SGF3-180W	Mono	815*590*35mm	1183*815*35mm	14.3kg	24.5	20.9	9.04	8.62
SGF3-200W	Mono	945*590*35mm	1183*945*35mm	16.5kg	28.5	24.4	8.61	8.20
SGF3-240W	Mono	1090*590*35mm	1183*1090*35mm	18.9kg	22.3	19.1	13.19	12.57
SGF3-270W	Mono	900*770*35mm	1543*900*35mm	20.5kg	24.5	20.9	13.56	12.92
SGF3-300W	Mono	1000*770*35mm	1543*1000*35mm	22.8kg	27.1	23.2	13.58	12.94
SGF3-4*100W	Mono	970*604*80mm	2551*970*18mm	18.5kg	38.7	33.1	12.69	12.09

Electrical Characteristics

The maximum system voltage	100V DC(IEC)
Power temperature coefficient	-0.35%/ C
Voltage temperature coefficient	-0.275%/ C
Current temperature coefficient	+0.045%/ C
Output power tolerance	±3%
Operating Temperature	-10 C ~60 C
Warranty	10 years

RIGID SOLAR PANEL

SGM / SG-DG Series

SGM / SG-DG SERIES

RIGID SOLAR PANEL

Rugged / Efficient / Long Warranty / Suitable for Various Applications



Durable & Efficient Rigid Solar Panel

Sungold offers rigid solar panels: monocrystalline solar panels SGM series and bifacial solar panels SG-DG series, which adopt advanced production processes and materials to ensure the high performance and reliability of the products.

Additionally, the SGSP series, featuring SunPower cells, provides enhanced compatibility and efficiency for various applications.



SGM/SGSP Series:

10 Years Warranty Commitment

20 Years Long Service Life

SG-DG Series:

12 Years Warranty Commitment

30 Years Long Service Life



SGM SERIES
Monocrystalline Solar Panels



SG-DG SERIES
Bifacial Solar Panels



SGM SERIES

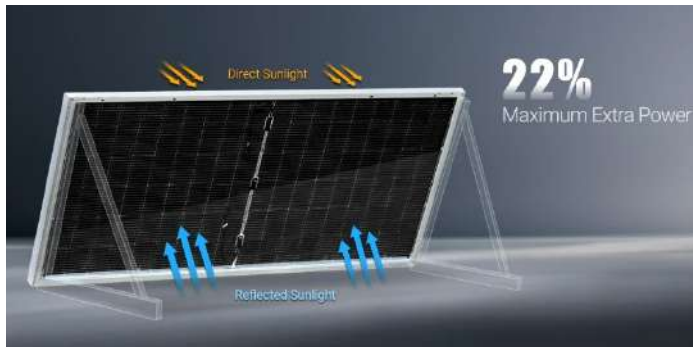
MONOCRYSTALLINE SOLAR PANELS

Off grid solar system SGM series rigid solar panels as a standard solar module with monocrystalline solar cells for high-efficiency output.

SG-DG SERIES

BIFACIAL SOLAR PANELS

Sungold Bifacial Solar Panel SG-DG Series Provides High Weather Resistance And Power Generation Efficiency Through Double-Layer Toughened Glass Construction For A Wide Range Of Environments.



SPECIFICATION 【 Topcon and BC solar cells 】

Model	Cells	Model size	Voc(V)	Vmp(V)	Isc(A)	Imp(A)	Model	Cells	Model size	Voc(V)	Vmp(V)	Isc(A)	Imp(A)
SGM2-N-100W	Mono	860*575*30mm	28.0	24.8	4.23	4.04	SGM2-BC-150W	Mono	1010*770*30mm	29.0	25.2	6.13	5.96
SGM2-N-160W	Mono	980*765*35mm	28.7	25.4	6.61	6.30	SGM2-BC-275W	Mono	1785*770*30mm	26.08	22.68	12.49	12.13
SGM2-N-200W	Mono	1260*765*35mm	36.9	32.5	6.46	6.16	SGM2-BC-460W	Mono	1980*1134*30mm	43.5	37.8	12.53	12.17
SGM2-N-240W	Mono	1450*765*35mm	43.0	38.1	6.61	6.33	SGSP-55W	Sunpower	560*540*25mm	23.3	19.8	2.94	2.78
SGM2-N-325W	Mono	1310*1134*35mm	43.0	38.1	8.96	8.54	SGSP-110W	Sunpower	1305*405*30mm	21.9	18.6	6.27	5.92
SGM2-N-390W	Mono	1555*1134*30mm	34.4	30.5	13.43	12.79	SGSP-145W	Sunpower	1305*540*35mm	29.2	24.8	6.20	5.85
SGM2-N-485W	Mono	1925*1134*30mm	43.0	38.1	13.37	12.73	SGSP-160W	Sunpower	1430*540*35mm	32.1	27.3	6.21	5.87
SGM2-N-585W	Mono	2300*1134*30mm	51.6	45.7	13.44	12.81	SGSP-200W	Sunpower	1430*660*35mm	40.1	34.1	6.22	5.87
Model	Cells	Model size	Voc(V)	Vmp(V)	Isc(A)	Imp(A)	Electrical Characteristics						
SG-DG-145W	Mono	1030*770*30mm	27.1	23.2	6.56	6.26	The maximum system voltage	SGM2/SGSP : 1000V DC(IEC)	SG-DG : 1500V DC(IEC)				
SG-DG-175W	Mono	1225*770*30mm	32.5	27.8	6.61	6.30	Power temperature coefficient	SGM2/SGSP : -0.32%/-0.27%/ C	SGM2/SG-DG:-0.35%/ C				
SG-DG-230W	Mono	1595*770*30mm	32.5	27.8	8.69	8.28	Voltage temperature coefficient	SGM2/SGSP : -0.26%/-0.236%/ C	-0.275%/ C				
SG-DG-260W	Mono	1770*770*30mm	24.5	20.9	13.06	12.45	Current temperature coefficient	SGM2/SGSP : +0.046%/+0.058%/ C	+0.045%/ C				
SG-DG-350W	Mono	1595*1134*30mm	48.9	41.8	8.79	8.38	Output power tolerance	SGM2/SGSP : ±3%	±3%				
SG-DG-390W	Mono	1770*1134*30mm	36.6	31.3	13.08	12.47	Operating Temperature	SGM2/SGSP : -40 C~85 C	-40 C~85 C				
							Warranty	SGM2/SGSP : 10 years	SG-DG :12 years				

CURVED SOLAR TILE

FLAT SOLAR TILE

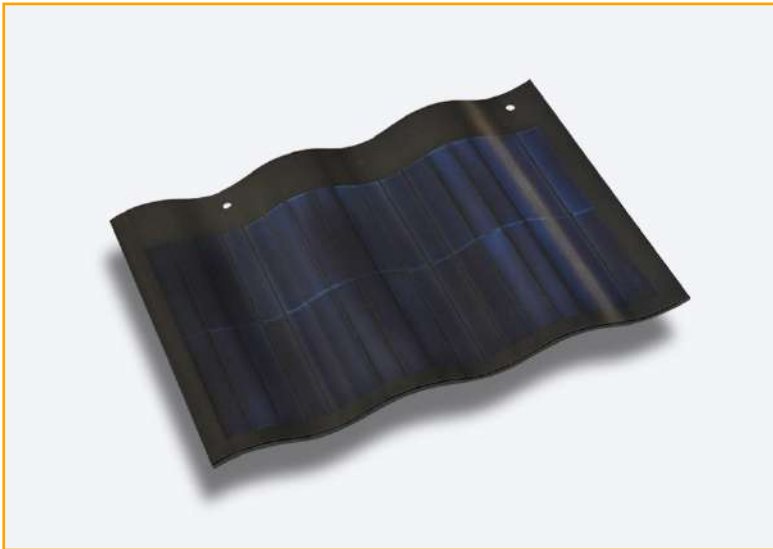
Rooftop power generation solutions:
blending aesthetics with high-efficiency power generation

High protection | Flexible | Easy to install



CURVED SOLAR TILE

Integrated power generation solution for sloping roofs



Integrated Dual-Panel System

The new curved laminated design has BC solar cells and looks clean. It has about 120 W/ m².

Easy Install & High Durability

It is easy to care for and strong against wind because it has two points of hanging and interlocking.

Upgrades for dual waterproofing and airflow

Better convection airflow keeps heat from building up and makes the structure more stable.



Innovative Structure

Flexible dual-glass reinforced curve



Wind Resistant

Two-point & interlocking mount



Fireproof Class A

Meets roof fire standards

Model	SG-SRT2-50W
Power	50 W
Dimensions	860 × 480 × 45 mm
Weight	5.8 Kg
Solar Cells	BC [Busbar-free Front Design]
Waterproof / Fire Rating	IP67 / Class A
Bending Height / Curvature	45 mm / 120°
Operating Temperature	-40 ~ 85 °C
Applicable Roof Type	Cement Sloped Roof

FLAT PV TILE

New Integration of PV & Roof

Stronger and Lighter

The dual-glass and aluminium alloy frame makes it strong, long-lasting, and easy to move and set up.

Safe and reliable

It has a Class A fire rating and can withstand mechanical loads of +5400 Pa and +2400 Pa, hail impacts of Ø25 mm at 23 m/s, as well as exposure to water, fire, and wind.

Simple to install and very efficient

210R N-TOPCon solar cells for high power density, low degradation, and easy modular mounting.



Lighter & Stronger
easy construction & logistics



Safe & Durable
Waterproof / Fireproof / Windproof



High Efficiency
N-type TOPCon cells

Model	SG-SRT-100W
Power	100 W [Black]
Dimensions	L1343 × W400 mm
Weight	7.65 Kg
Solar Cells	210 [N-type TOPCon Monocrystalline]
Waterproof / Fire Rating	IP67 / Class A
Connector	MC4
Operating Temperature	-40 ~ 85 °C
Warranty	10 Years Product Warranty



ShenZhen Sungold Solar Co.,Ltd

Collaboration Across Three Locations, Serving the Globe

Shenzhen Headquarters

Wentao Industrial Park, Yingrenshi Community, Shiyao Town,
Shenzhen City, Guangdong Province, China

Changsha Office

Office 1027, Tianxiang Crystal Bay Building, No. 868 Huanhu Road,
Yuelu District, Changsha, Hunan, China

Indonesia Factory

Factory Block E Lot 5, Jl. Ahmad Yani, Panbil Industrial Estate,
Muka Kuning-Batam 29433, Indonesia



+86 755 2968 5821 ext. 813/881



sales@sungoldsolar.cn



www.sungoldsolar.com